

## 9. Antenna Solution



### FEATURE

- Repeater Antenna
- Base Station Antenna
- Cassegrain Antenna
- Microwave Antenna
- Standard Gain Horn Antenna

### APPLICATION

- TETRA, GSM, WCDMA, LTE, 5G
- Point to Point Wireless Link



■ Antenna

Antenna

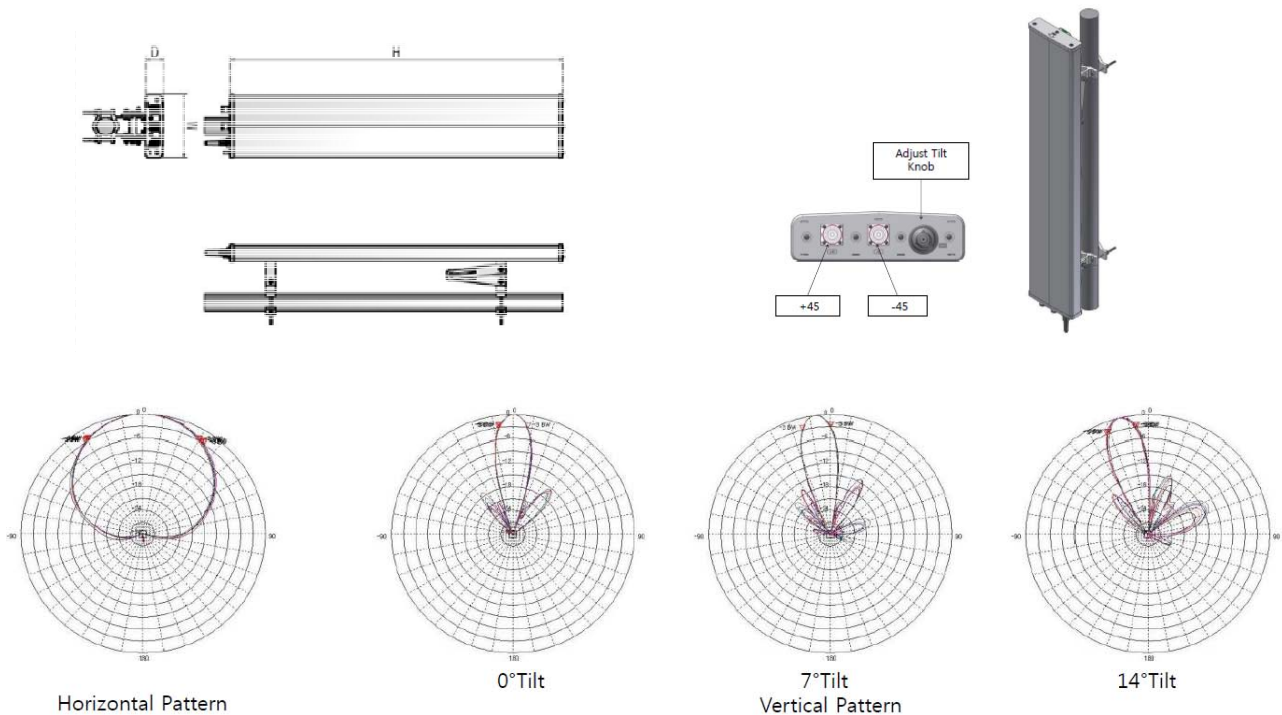
Part Number	Adjustable/ Fixed Tilt	Frequency (MHz)	Horizontal Beam Width	Vertical Beam Width	Gain (dBi)	Dimension (WxDxH) mm
ADSB1710-2170G17DIN_SW	0°~10°	1710~2170	65°	7°	17	160 x 72 x 1430
ADSBPAX1710-2170 G15.5DIN_SW	0°~10°	1710~2170	65°	10°	15.5	160 x 72 x 1070
ADSBPAX1710-2170 G13.5DIN_SW	0°~14°	1710~2170	65°	15°	13.5	160 x 72 x 630
FXDBCSAX839-894/1710-2170 G5/7DIN_SW	0°	839~894 1710~2170	100° 70°	70° 65°	5 7	Ø120 x 450
FXDBCSAX839-894/1710-2170 G4.5/6.5DIN_SW	0°	839~894 1710~2170	100° 70°	70° 65°	4.5 6.5	Ø120 x 450
FXDBCSASX839-894/1710-2170 G4.5/6.5DIN_SW	0°	839~894 1710~2170	130° 70°	70° 65°	4.5 6.5	Ø81 x 250
FXSBCSAX1920-2170G7.5DIN_SW	0°	1920~2170	70°	60°	7.5	Ø120 x 250
FXSBOmniV1920-2170G10.5DIN_SW	0°	1920~2170	360°	7°	10.5	Ø49.8 x 1630
ADSBPAX839-894G14.5DIN_SW	0°~14°	839~894	65°	14°	14.5	261 x 70 x 1393
ADSBPAX839-894G12.5DIN_SW	0°~14°	839~894	65°	23°	12.5	261 x 70 x 839
AADBPAX839-894/1710-2170 G14.5/14DIN_SW	0°~14°	839~894 1710-2170	65° 63°	13° 12°	14.5 14	297 x 110 x 1475
AADBPAX839-894/1710-2170 G12.5/12DIN_SW	0°~14°	839~894 1710-2170	65° 63°	22° 20°	12.5 12	297 x 110 x 960
AADBPAX839-894/1710-2170G14 /13.5DIN_SW	0°~14°	839~894 1710-2170	65° 63°	13° 12°	14 13.5	297 x 110 x 1468
FXSBPAX839-894G14.5 DIN_SW	0°	839~894	65°	14°	14.5	261 x 70 x 1378
FXSBPAX839-894G14.5 T8DIN_SW	8°	839~894	65°	14°	14.5	261 x 70 x 1378
ADSBPAX2500-2660G17.5 DIN_SW	0°~10°	2500~2660	59°~71°	4°~10°	17.5	160 x 80 x 1190
AADBPAX839-894/2500-2660 G14.5/16DIN_SW	0°~14° 0°~10°	839~894 2500~2660	60°~70° 54°~72°	10°~16° 6°~12°	14.5 16	297 x 150 x 1499
ADTBPAX839-894/1755-2130 /2500-2660 G14.5/14/15DIN_SW	0°~14° 0°~14° 0°~10°	839~894 1755~2130 2500~2660	60°~70° 54°~72° 54°~72°	10°~16° 9°~15° 6°~12°	15 14.5 14	297 x 150 x 1599
FXTBCSAX839-894/1755-2130 /2500-2660 G5/7/7.5DIN_SW	0°	839~894 1755~2130 2500~2660	70°~100° 40°~100° 40°~100°	40°~100° 35°~95° 35°~95°	5 7 7.5	Ø120 x 506
FXDBYAV/H819-960/1710-2690 G8/14N_SW	0°	819~960 1710~2690	50°~120° 25°~60°	30°~80° 20°~55°	8 14	1200 x 100 x 200
FXDBOmniV819-960/1710-2690 G3/3.5N_SW	0°	819~960 1710~2690	360°	30°~140° 30°~90°	3 3.5	Ø147 x 15
FXDBPAV/H819-960/1710-2690 G5/7N_SW	0°	819~960 1710~2690	60°~130° 40°~90°	40°~90° 40°~90°	5 7	198 x 198 x 68
FXDBYAV/H819-960/1710-2690 G8/11N_SW	0°	819~960 1710~2690	40°~80° 35°~60°	40°~80° 30°~50°	8 11	698 x 100 x 200
FXDBYAV/H819-960/1710-2690G8 /14N_SW	0°	819~960 1710~2690	60°~130° 25°~60°	40°~90° 20°~55°	8 14	100 x 36 x 1080
FXDBYAV/H819-960/1710-2690 G12/12N_SW	0°	819~960 1710~2690	20°~70°	20°~70°	12 12	100 x 40 x 1251
FXDBYACV/H819-960/1710-2690 G8/14N_SW	0°	819~960 1710~2690	60°~130° 25°~60°	40°~90° 20°~55°	8 14	Ø100 x 1100
FXDBYACV/H819-960/1710-2690 G12/12N_SW	0°	819~960 1710~2690	20°~70°	20°~70°	12 12	Ø100 x 1288
FXDBYAV819-960/1710-2690 G12/12N_SW	0°	819~960 1710~2690	20°~70°	20°~70°	12 12	40 x 1250 x 100

■ Antenna

## Antenna

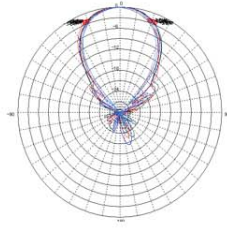
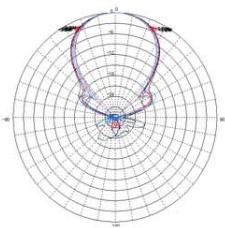
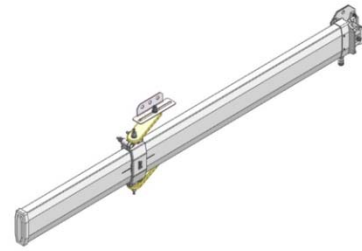
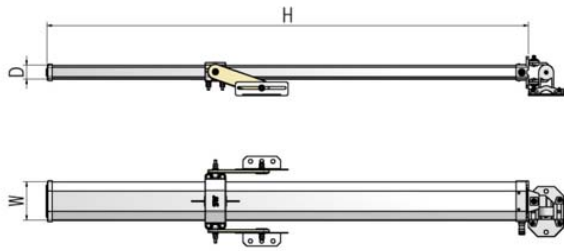
Part Number	Adjustable/ Fixed Tilt	Frequency (MHz)	Horizontal Beam Width	Vertical Beam Width	Gain (dBi)	Dimension (WxDxH) mm
FXDBYAV819-960/1710-2690 G8/14N_SW	0°	819~960 1710~2690	60°~130° 25°~60°	40°~90° 20°~55°	8 14	40 x 1085 x 100
FXDBYAV819-960/1710-2690 G5/11N_SW	0°	819~960 1710~2690	70°~130° 35°~60°	50°~90° 30°~55°	5 11	40 x 635 x 100
FXDBOmniV819-960/1710-2690 G2/3N_SW	0°	819~960 1710~2690	360°	30°~140° 30°~90°	2 3	Ø180 x 110
FXDBOmniV824-894/1710-2170 G2/2N_SW	0°	824~894 1710~2170	360°	30°	2 2	Ø20 x 215
FXDBPAV819-960/1710-2690 G5/6N_SW	0°	819~960 1710~2690	60°~130° 40°~80°	50°~110° 40°~80°	5 6	111 x 45 x 145
FXDBPAV839-894/1710-2120 G6/8N_SW	0°	839~894 1710~2120	70°~90° 40°~80°	70°~90° 40°~80°	6 8	168 x 43 x 155
FXTBPAV839-894/1710-2120/2520 -2660 G6/8/8N_SW	0°	839~894 1710~2120 2520~2660	70°~90° 40°~80° 40°~80°	70°~90° 40°~80° 40°~80°	6 8 8	168 x 43 x 155
FXSBDFAV/H10200-11700 G38WR76_CO	0°	10200~11700	2°	2°	38	Ø900
FXSBDFAV/H4400-5000G20N_CO	0°	4400~5000	14°	14°	20	Ø300
FXSBDFAV/H4400-5000G23N_CO	0°	4400~5000	9°	9°	23	Ø450
FXSBDFAV/H4400-5000G26N_CO	0°	4400~5000	7°	7°	26	Ø600
FXSBDFAV/H4400-5000G29N_CO	0°	4400~5000	5°	5°	29	Ø900
FXSBDFAV/H4400-5000G32N_CO	0°	4400~5000	3°	3°	32	Ø1200
FXSBDFAV/H4400-5000G35N_CO	0°	4400~5000	2°	2°	35	Ø1800
FXSBOmniV380-400G7.5DIN_SW	0°	380~400	360°	19°~29°	7.5	Ø48.5mm x 2.4m
FXSBOmniV380-470G0N_SW	0°	380~470	360°	50°	0	Ø75 x 220
FXSBOmniV1710-2700G2N_SW	0°	1710~2700	360°	-	0	Ø19 x131
FXWSPX57000-66000G37WR15	0°	57000~66000	1.9	1.9	37	141.6 x 140 x 9
FXWSPX71000-86000G42WR12	0°	71000~86000	1	1	42	210 x 210 x 7

### PANEL ANTENNA



■ Antenna

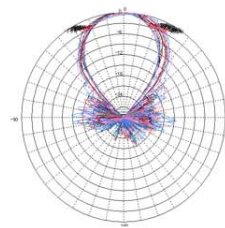
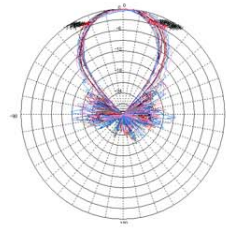
YAGI ANTENNA



Horizontal Pattern

Vertical Pattern

Low Band

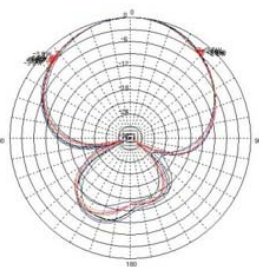
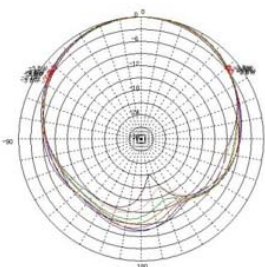
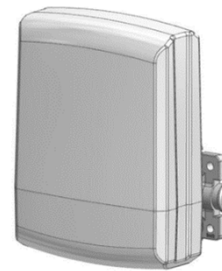
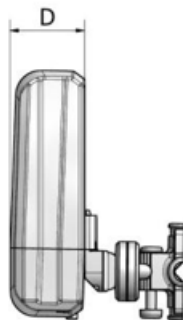
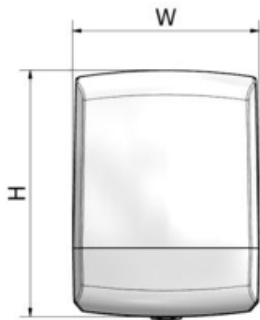


Horizontal Pattern

Vertical Pattern

High Band

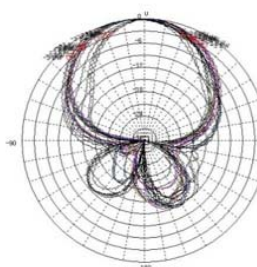
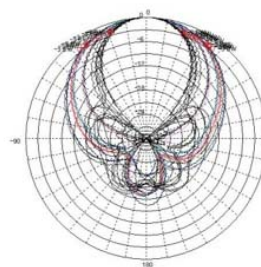
PATCH ANTENNA



Horizontal Pattern

Vertical Pattern

Low Band



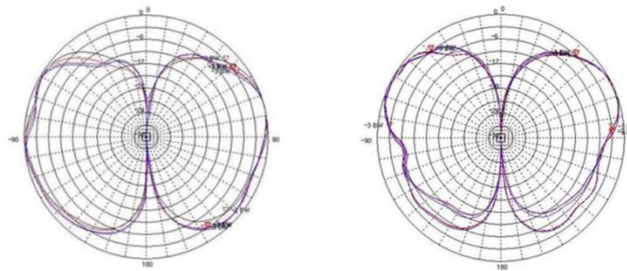
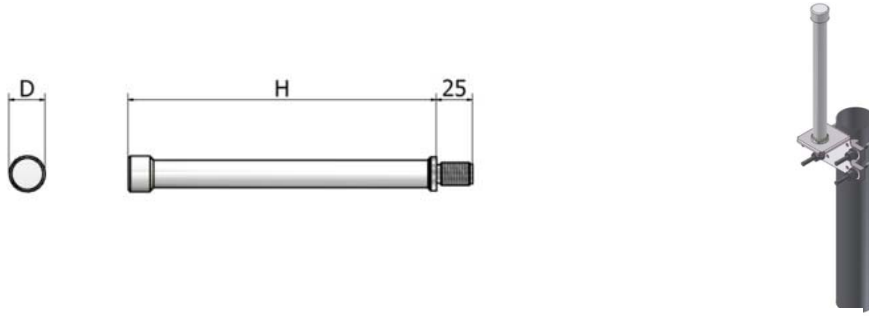
Horizontal Pattern

Vertical Pattern

High Band

## ■ Antenna

### DIPOLE ANTENNA

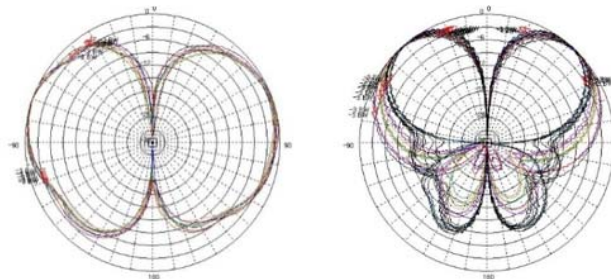
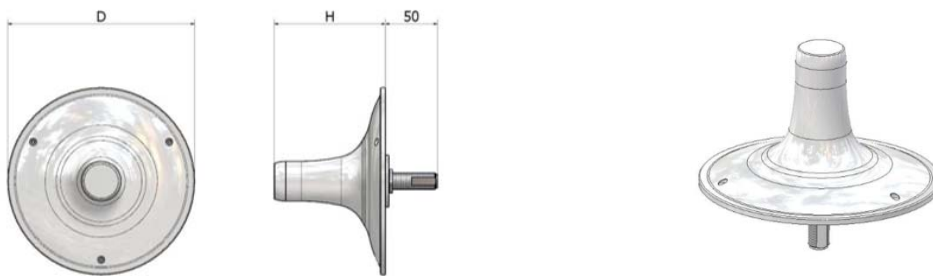


Vertical Pattern

Low Band

High Band

### CEILING ANTENNA



Vertical Pattern

Low Band

High Band